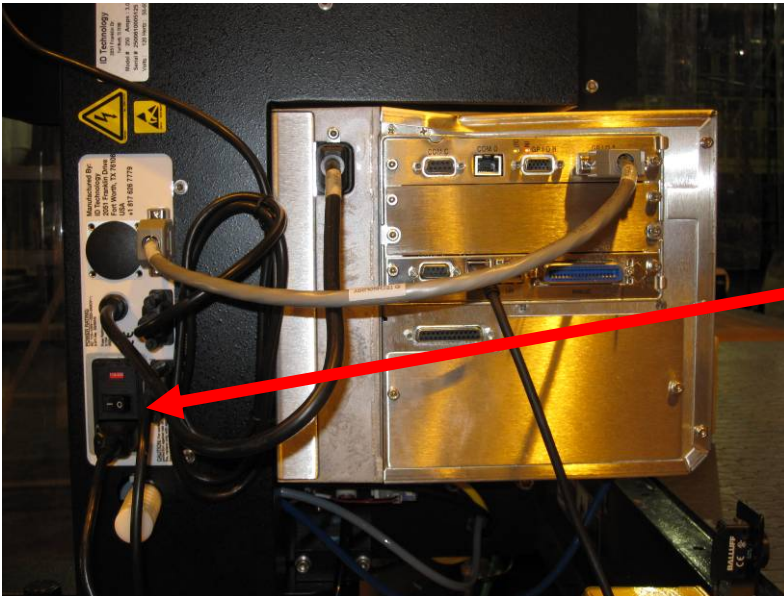


Power on/off:

* Flip the main power switch, found on the back of the applicator.



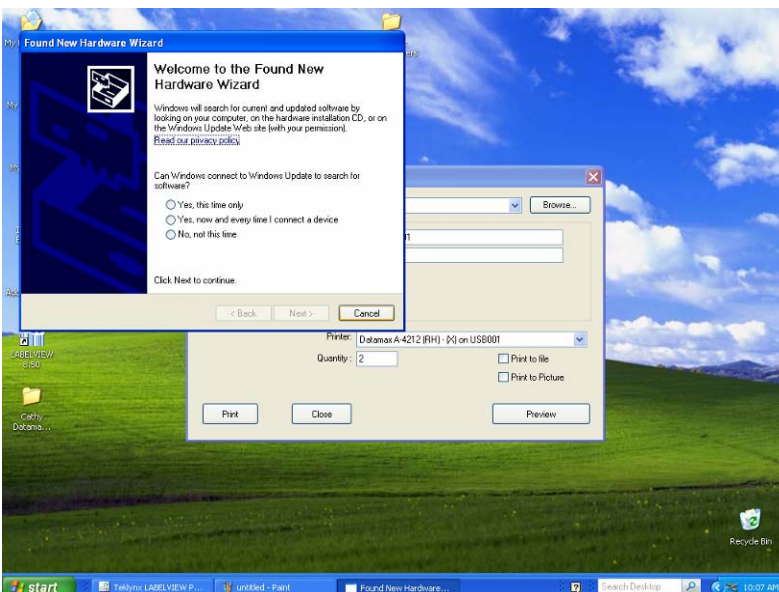
Power on/off:

* In 20-30 seconds it should be ready and the indicator light should turn green.



Power on/off:

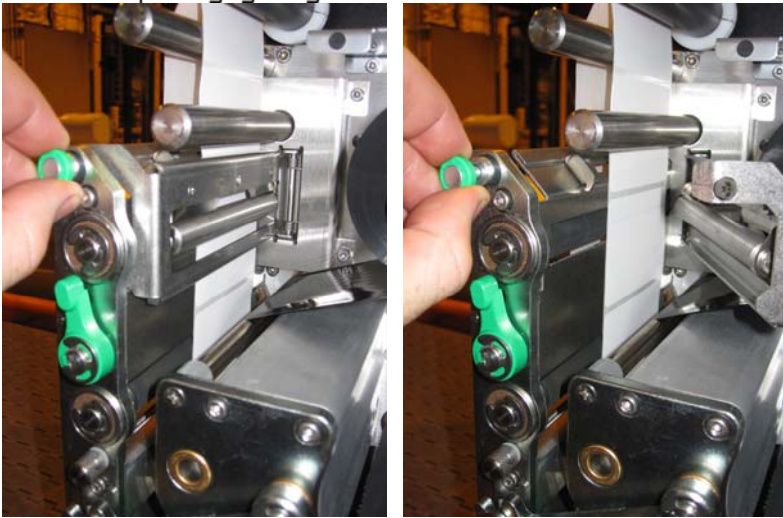
* If you get the Found New Hardware pop-up at any time, choose *Cancel*.



Loading the labels:

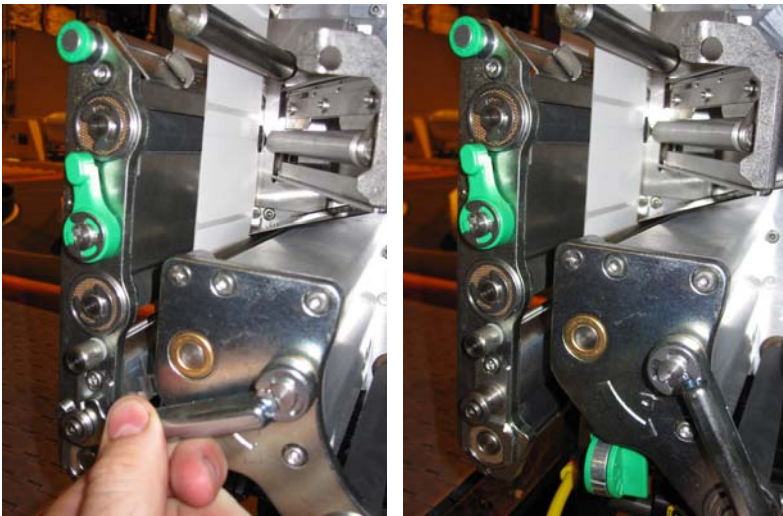
* *Power off labeler*

1. Pull green knob and roller should swing out.



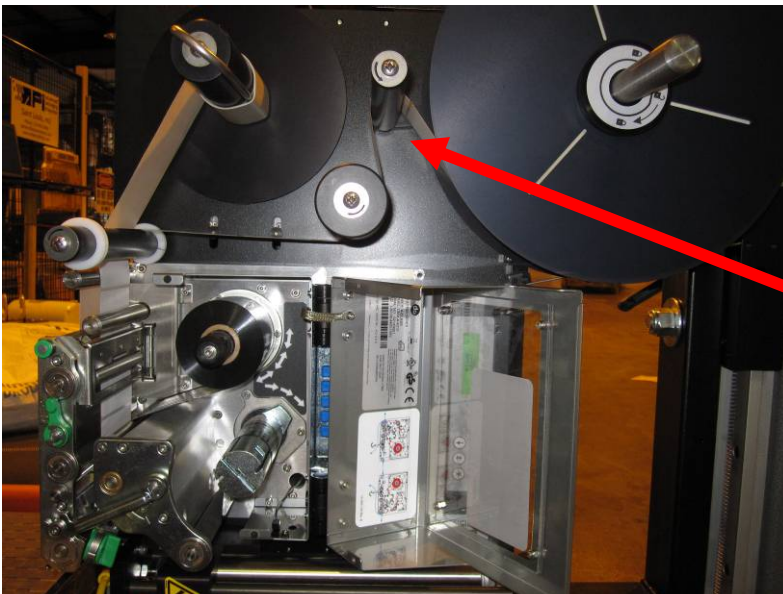
Loading the labels:

2. Push down on the lever so the print head springs out.



Loading the labels:

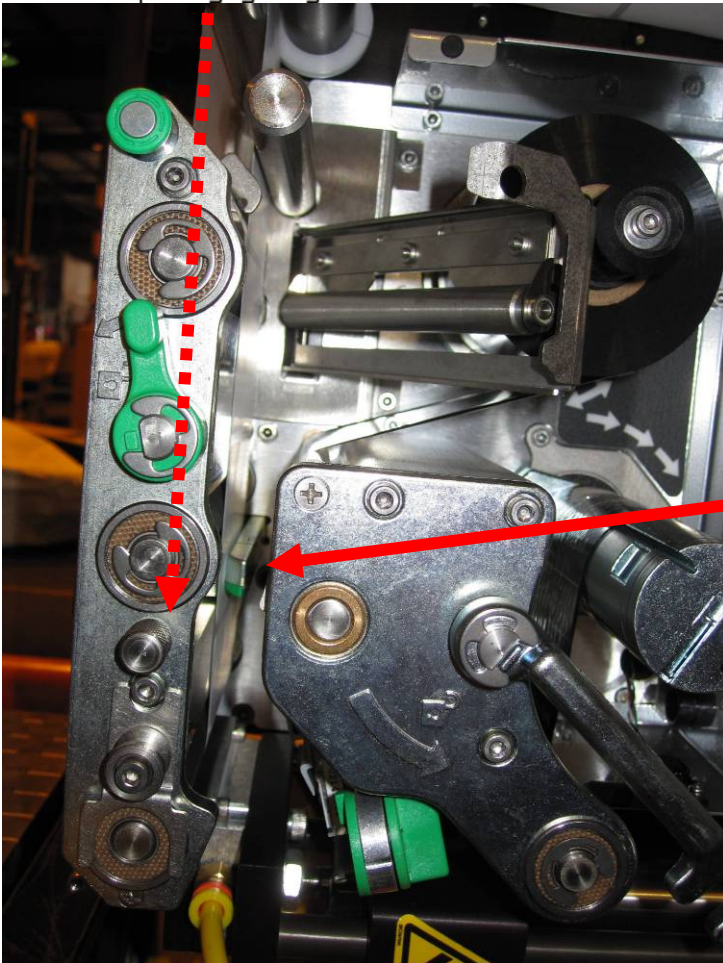
3. Put new roll of labels on and feed through the applicator rollers.



Loading the labels:

4. Feed labels straight down through the open rollers.

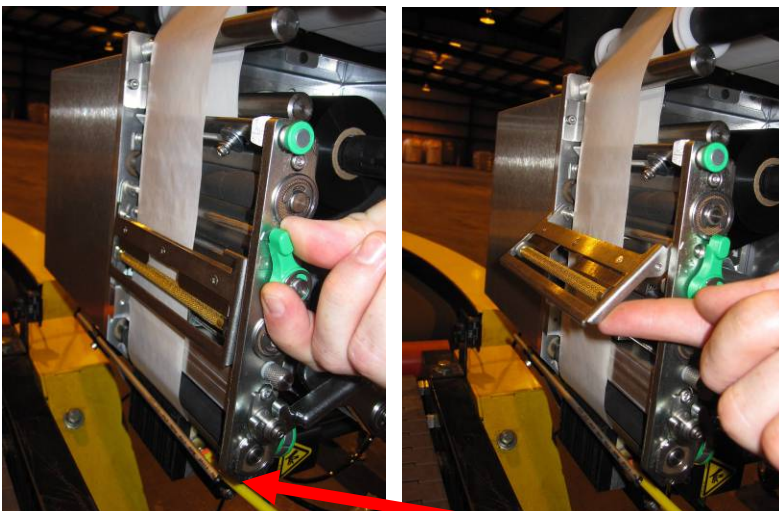
Make sure to feed between the guides.



Loading the labels:

5. Feed the backing material up the front, under the brass roller, and up onto the take-up spindle (see photo from step 3)

Double-check that the air assist tube is not wrapped.



Loading the ribbon:

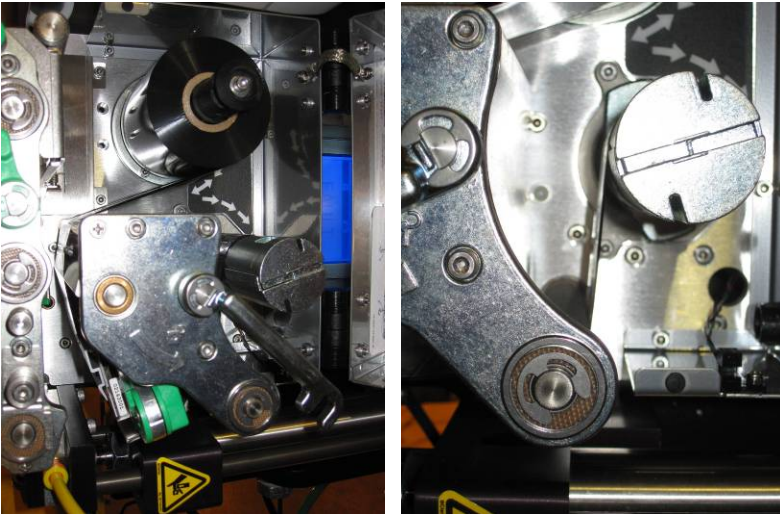
** Power off labeler*

1. Push down on the lever so the print head springs out.



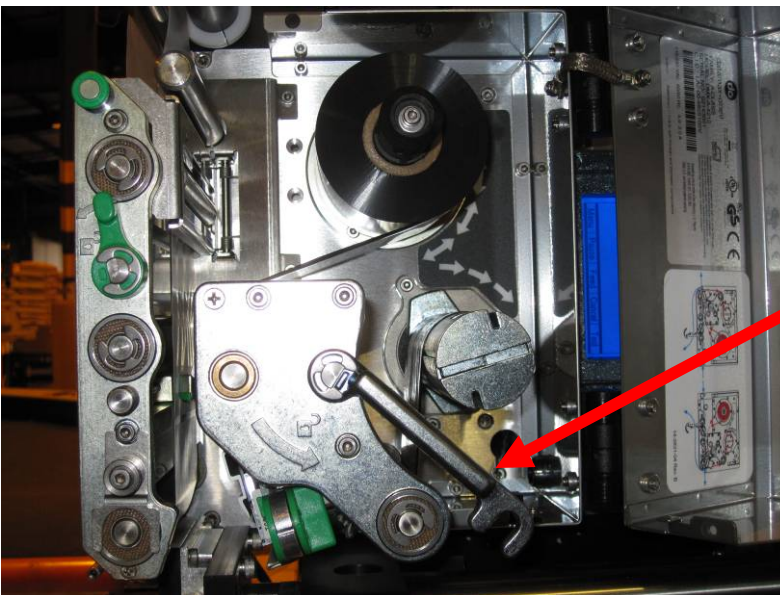
Loading the ribbon:

2. Put on ribbon, feed it down and around the print head, and wrap the take-up spindle.



Loading the ribbon:

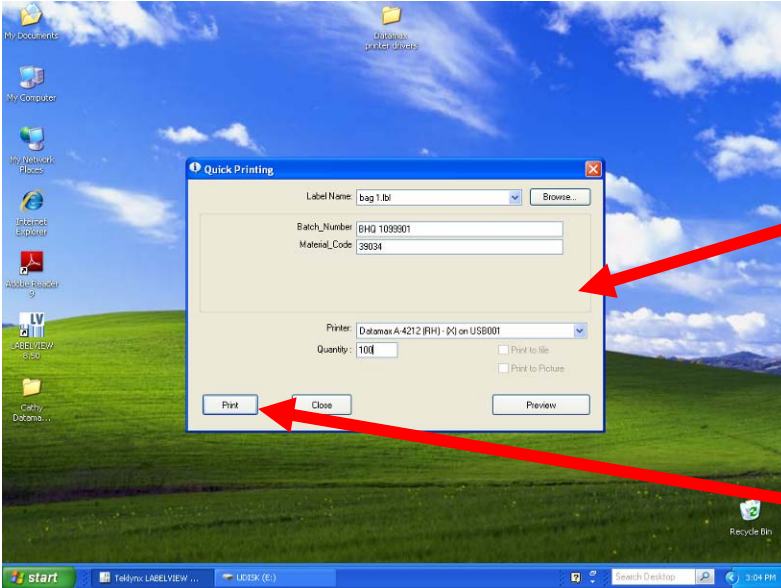
3. Double-check the ribbon and close the print head lever.



Printing labels:

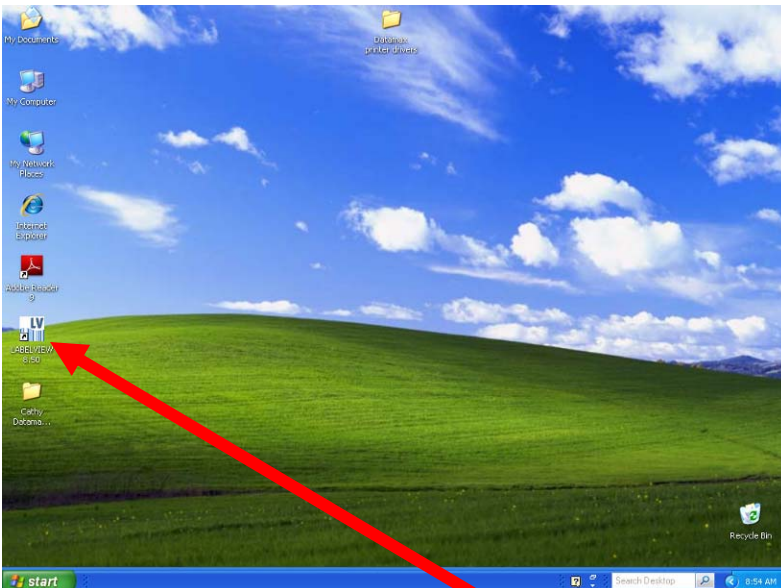
In the *Quick Printing* window, change the *Batch Number*, *Material Code*, and the *Quantity* of bags.

Press *Print*. That's it!



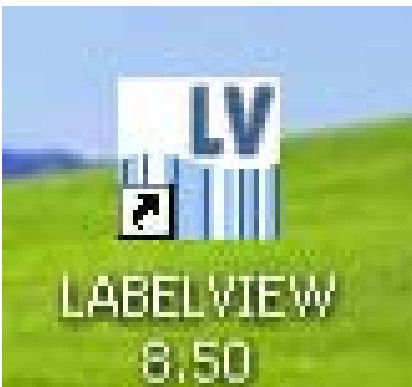
Printing labels:

If you do not see the *Quick Printing* window...



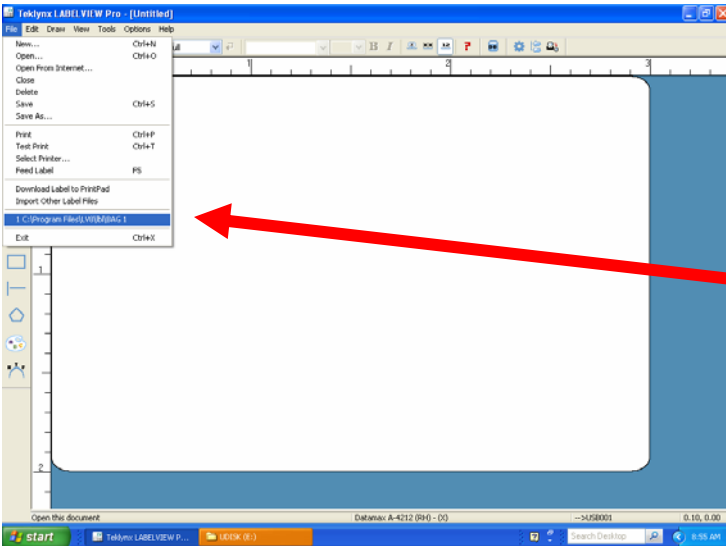
Printing labels:

1. Double-click on the LABELVIEW 8.50 icon.



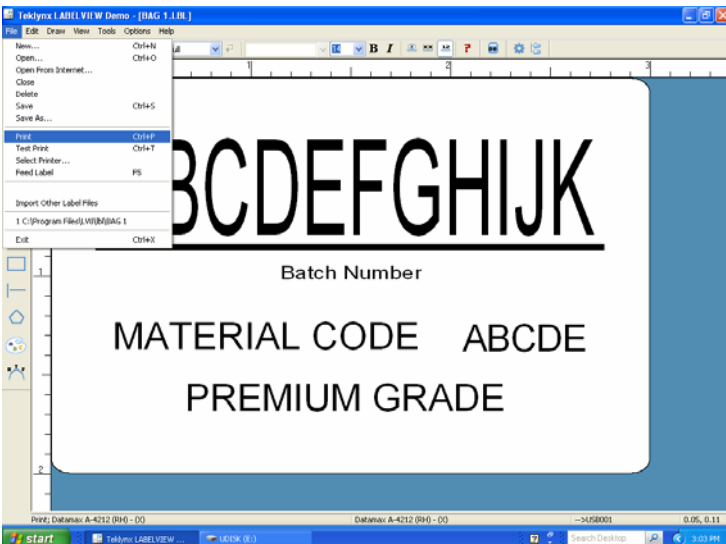
Printing labels:

2. After *LabelView* opens, click on *File* and choose the last used label file at the bottom of the menu.



Printing labels:

3. After the label opens, click on *File* and choose *Print*.



Printing labels:

4. *LabelView* should minimize, and the *Quick Printing* window should pop-up. (Follow directions at beginning of the *Printing labels* section found on the previous page.)

